

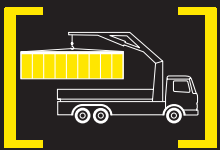
# PK 18001 L / 20001 L

Performance

**PALFINGER CRANE**



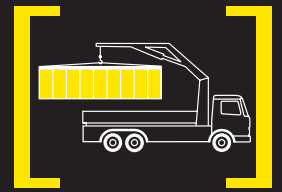
THE SPECIALIST IN TRANSPORTING BUILDING MATERIALS



# THE PK 18001 L *Performance*

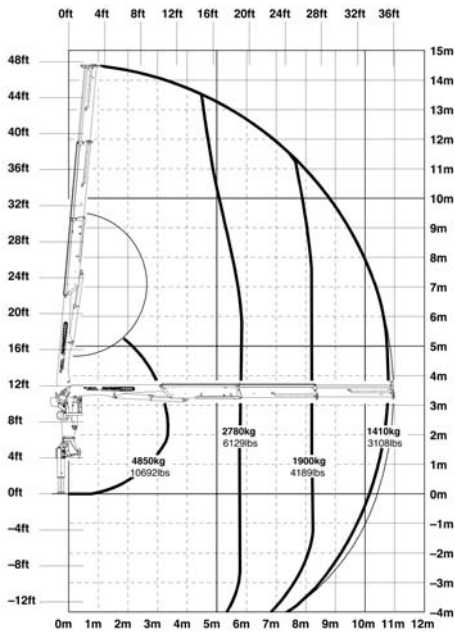
The PK 18001 L is synonymous with safe and speedy movement of construction materials. Both the great outreach and the tremendous working speed enable easy loading of pallets and other such items.

Particularly impressive is the slewing angle of 440 degrees, allowing the crane operator to work over the complete loading area.

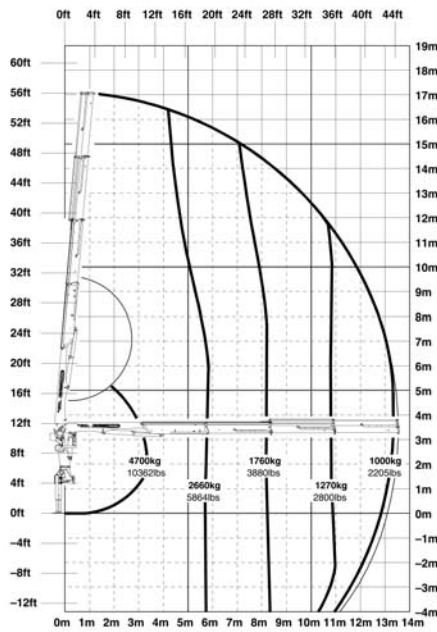


# QUALITY FROM PALFINGER

## PK 18001 LA Performance



## PK 18001 LB Performance



### PK 18001 L Performance

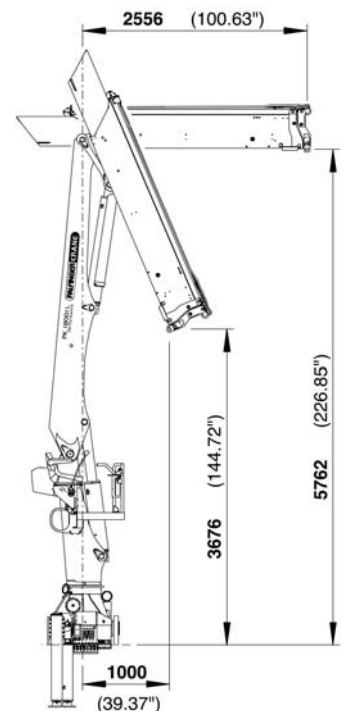
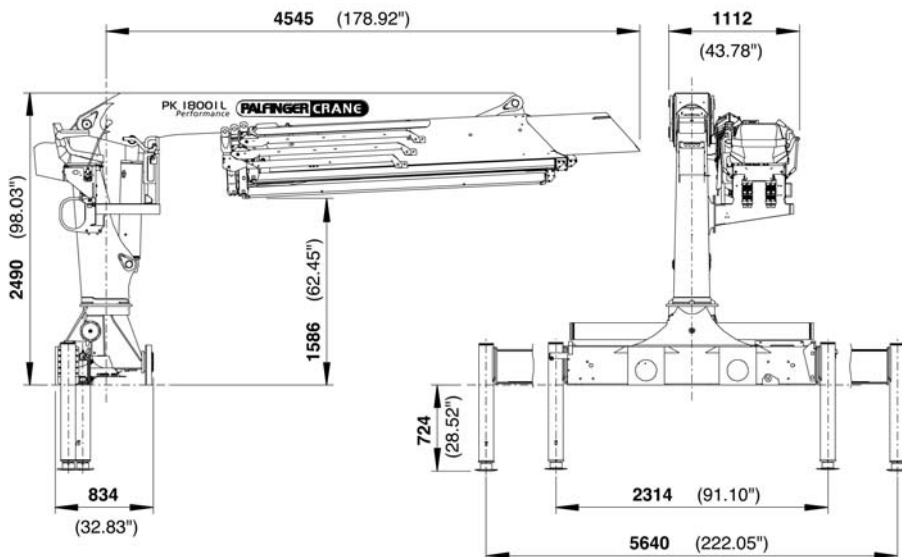
#### Technical Specifications (EN 12999 H1-B3)

Max. lifting moment	17.0 mt/167.0 kNm	123130 ft.lbs
Max. lifting capacity	5000 kg/49.1 kN	11020 lbs
Max. hydraulic outreach	13.5 m	44' 3"
Slewing angle	440°	440°

### PK 18001 L Performance

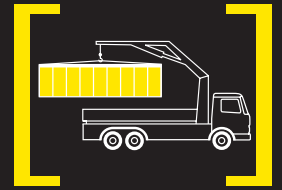
#### Standard crane

Slewing torque	2.3 mt/22.6 kNm	16660 ft.lbs
Outreach	8.4 m	27' 7"
Stabilizer spread standard	5.6 m	18' 6"
Stabilizer spread maximal	6.6 m	21' 9"
Width folded	2.5 m	8' 2"
Max. operating pressure	300 bar	4350 psi
Recommended pump capacity	from 45 l/min 9.9 imp.gal/min 11.9 US gal./min to 65 l/min 14.3 imp.gal/min 17.2 US gal./min	
LS-system	from 65 l/min 14.3 imp.gal/min 17.2 US gal./min to 90 l/min 19.8 imp.gal/min 23.8 US gal./min	
Dead weight standard crane	2202 kg	4850 lbs



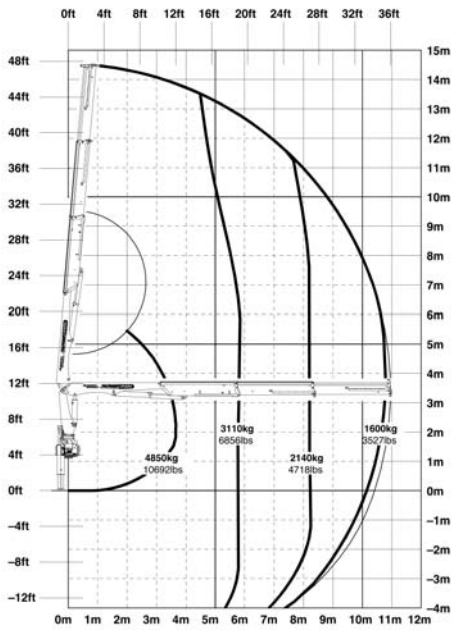
## THE PK 20001 L *Performance*

The PALFINGER package-concept makes the PK 20001 L a very efficient partner in building materials transportation. HPLS, the oil cooler and Paltronic 50 are all fitted as standard and enable great power and maximum operating convenience. By means of the radio remote control with its LED feedback display, difficult manoeuvres can be easily and precisely accomplished.

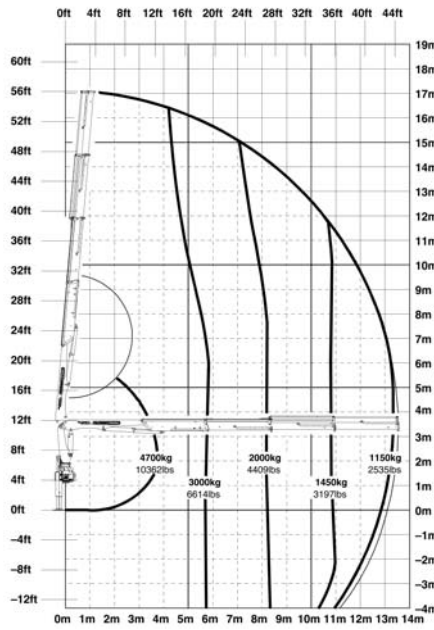


# PRECISE STEERING

## PK 20001 LA Performance



## PK 20001 LB Performance



### PK 20001 L Performance HPLS

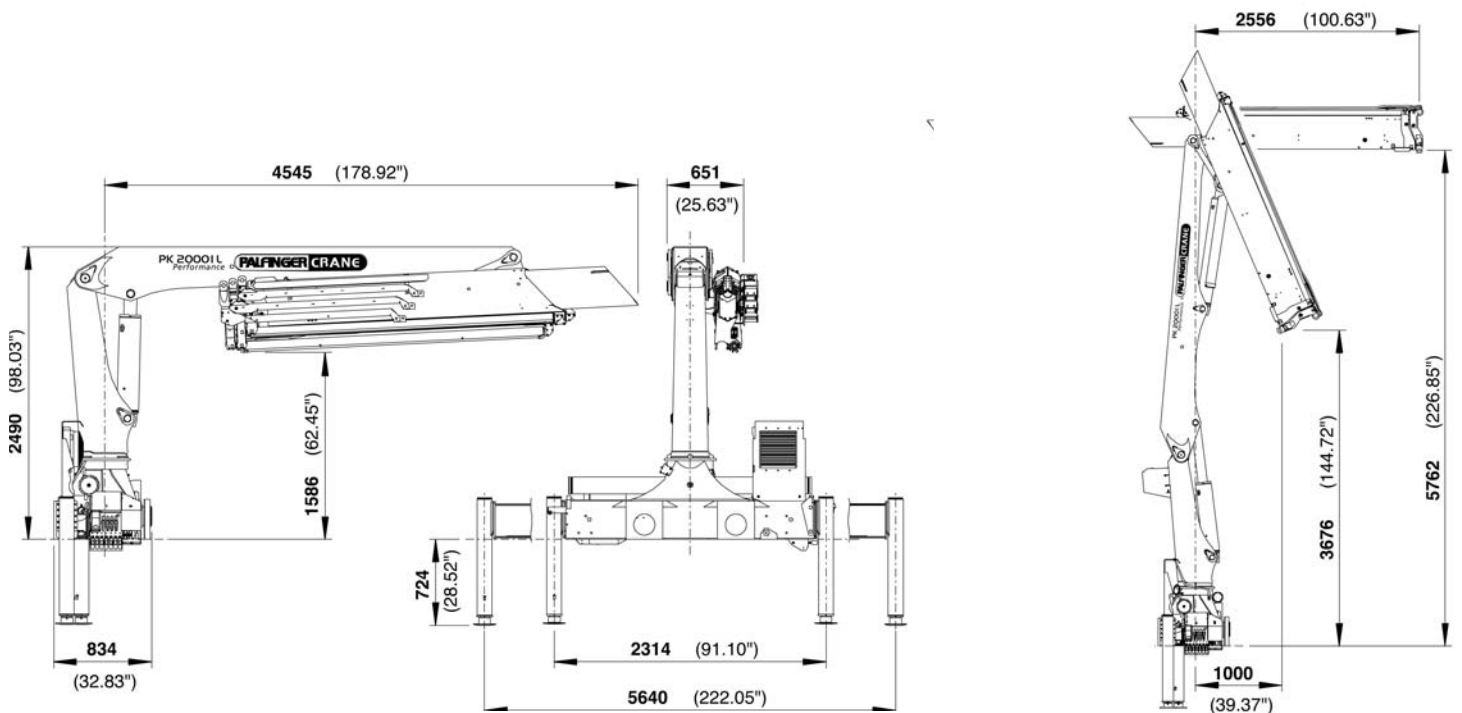
#### Technical Specifications (EN 12999 H1-B3)

Max. lifting moment	19.0 mt/186.4 kNm	137430 ft.lbs
Max. lifting capacity	5000 kg/49.1 kN	11020 lbs
Max. hydraulic outreach	13.5 m	44' 3"
Slewing angle	440°	440°

### PK 20001 L Performance HPLS

#### Standard crane

Slewing torque	2.3 mt/22.6 kNm	16660 ft.lbs
Outreach	8.4 m	27' 7"
Stabilizer spread standard	5.6 m	18' 6"
Stabilizer spread maximal	6.6 m	21' 9"
Width folded	2.5 m	8' 2"
Max. operating pressure	330 bar	4785 psi
Recommended pump capacity RC and LC-system	from 65 l/min 14.3 imp.gal/min 17.2 US gal./min to 90 l/min 19.8 imp.gal/min 23.8 US gal./min	
Dead weight standard crane	2172 kg	4790 lbs



## Stabiliser control

The stabilisers can be controlled from the high-seat.



## KTL – the cathodic dip painting

The shot-blasted crane parts are covered in zinc phosphate in an immersion process and coated electro-statically. The subsequent two-component top coating of paint provides a surface protection which in the past was usually only found in the automotive industry.

## Hose equipment for accessories

This option provides the oil supply for accessories. The hoses are routed in compact troughs and plastic link chains. Thus they are ideally protected.



## Load holding valves

They prevent the crane boom from dropping and are fitted as standard on the main boom cylinder, the extension boom cylinders and on the swivel cylinder. The valves are positioned in such a way that they are protected from being damaged.



## Internally routed oil passages

The internally routed oil passages make it possible to have a compact design for the extension system which also ensures perfect protection from damage.

## Advanced Package

- HPLS
- Radio control
- PALTRONIC 50
- oil cooler installed
- External 200 l additional tank



# YOUR IDEAL PARTNER



## Return oil utilisation

The high speed of the extension system is impressive. It results from the return oil utilization feature, which is installed as standard, combined with generously dimensioned hydraulic pipes. This results in increased efficiency during all types of working.



## Adjustable slide blocks

These ensure optimal lateral guidance of the extension system.



## Central lubrication

For all bearings on the base frame.



## Extension system

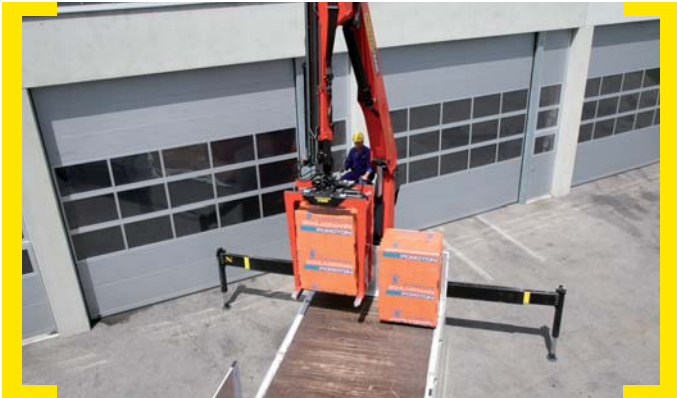
The extension cylinders are guided in Jordal rails. Height compensation of the extension cylinders.



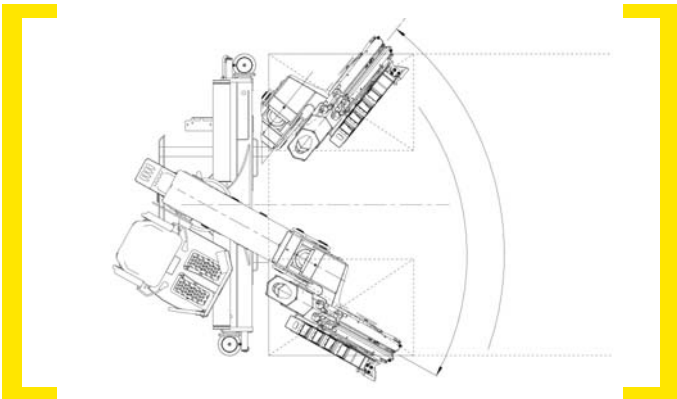
## Outriggers

The standard 5.6 m (18' 6") outriggers ensure optimum stability. As an option a 6.6 m (21' 9") telescopic outrigger is available. The pipework to the support cylinders is internally routed in the outriggers, providing a high level of protection from damage at all times.

# FEATURES AND BENEFITS



Thanks to the very good loading height in close range, the crane can move pallets over the entire loading area.



The slewing angle of 440 degrees enables the maximum radius of action.



The crane column is in the middle to ensure ideal load distribution and complete stability.



Special top seat for cranes in the building materials business providing excellent visibility and easy operation. New ergonomical ladder.

Applications shown in the leaflet do not correspond to the standard specifications. Design and specification are subject to change without prior notice.



Country-specific regulations must be considered for the crane installation.

[www.palfinger.com](http://www.palfinger.com)

KP-PK18/20001M1+E, 08/06